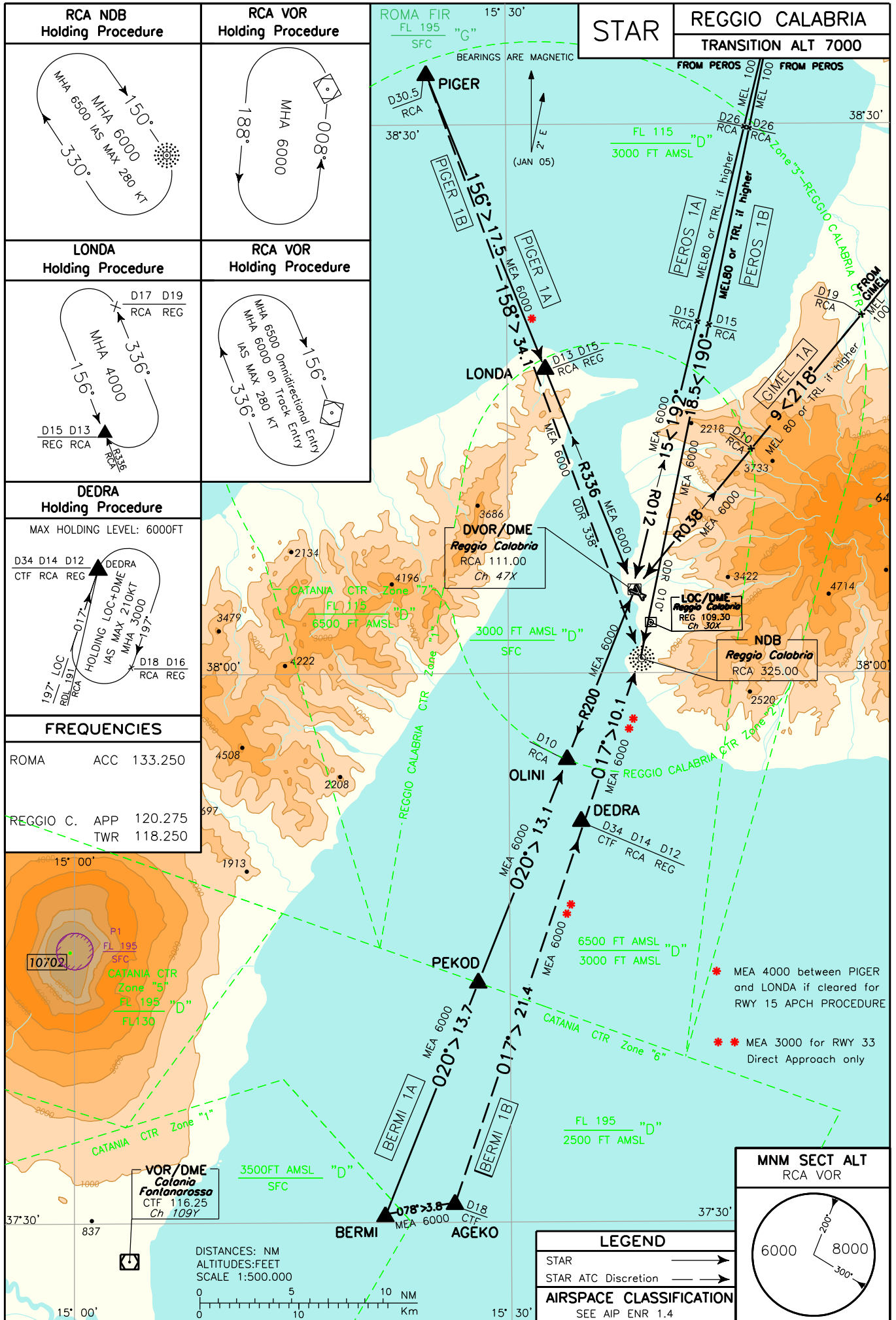


CHANGE: NEW PROHIBITED AREA P1 'ETNA'



PIGER 1A

PIGER – TR 156° (RDL 336 RCA VOR) – LONDA – RCA VOR/DME.

PIGER 1A

PIGER – TR 156° (RDL 336 RCA VOR) – LONDA – RCA VOR/DME.

MEA: PIGER – LONDA: 6000 FT (4000 FT se autorizzati per le procedure strumentali di avvicinamento RWY15/if cleared for RWY15 instrument approach procedures); LONDA – RCA VOR/DME: 6000 FT

PIGER 1B (A discrezione ATC)

PIGER – TR 158° (QDR 338° RCA NDB) – RCA NDB.

PIGER 1B (ATC discretion)

PIGER – TR 158° (QDR 338° RCA NDB) – RCA NDB.

MEA: PIGER – RCA NDB: 6000 FT

BERMI 1A

BERMI – TR 020° (RDL 200 RCA VOR) – PEKOD – OLINI – RCA VOR/DME.

BERMI 1A

BERMI – TR 020° (RDL 200 RCA VOR) – PEKOD – OLINI – RCA VOR/DME.

MEA: BERMI – RCA VOR/DME: 6000 FT

BERMI 1B (A discrezione ATC)

BERMI – TR 078° (RDL 078 CTF VOR) – AGEKO – TR 017° (QDR 197° RCA NDB) – DEDRA – RCA NDB.

BERMI 1B (ATC discretion)

BERMI – TR 078° (RDL 078 CTF VOR) – AGEKO – TR 017° (QDR 197° RCA NDB) – DEDRA – RCA NDB.

MEA: BERMI – AGEKO – DEDRA – RCA NDB: 6000 FT (3000 FT se autorizzati per un avvicinamento diretto per RWY33/if cleared for RWY33 direct approach)

PEROS 1A

PEROS – TR 192° (RDL 012 RCA VOR) – RCA VOR/DME.

PEROS 1A

PEROS – TR 192° (RDL 012 RCA VOR) – RCA VOR/DME.

MEL/MEA: PEROS – RDL 012/26 NM RCA VOR/DME: FL100; RDL 012/26 NM RCA VOR/DME - RDL 012/15 NM RCA VOR/DME: FL80 o livello di transizione se più alto/ or transition level if higher; RDL 012/15 NM RCA VOR/DME – RCA VOR/DME: 6000FT

PEROS 1B

PEROS – TR 190° (QDR 010° RCA NDB) – RCA NDB.

PEROS 1B

PEROS – TR 190° (QDR 010° RCA NDB) – RCA NDB.

MEL/MEA: PEROS – QDR 010° RCA NDB/26 NM RCA DME: FL100; QDR 010° RCA NDB/26 NM RCA DME - QDR 010° RCA NDB/15 NM RCA DME: FL80 o livello di transizione se più alto/ or transition level if higher; QDR 010° RCA NDB/15 NM RCA DME – RCA NDB: 6000FT

GIMEL 1A

GIMEL – TR 218° (RDL 038 RCA VOR) – RCA VOR/DME.

GIMEL 1A

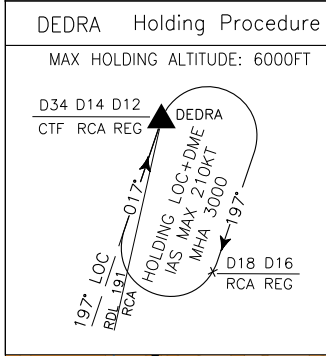
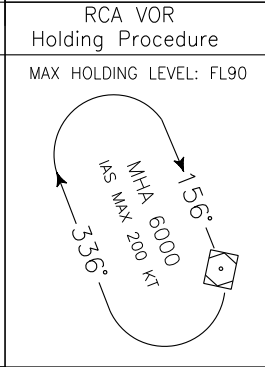
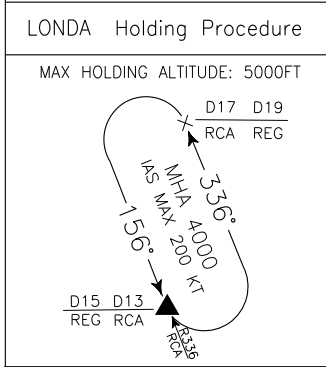
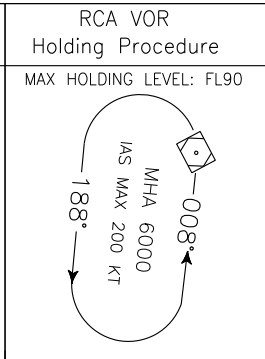
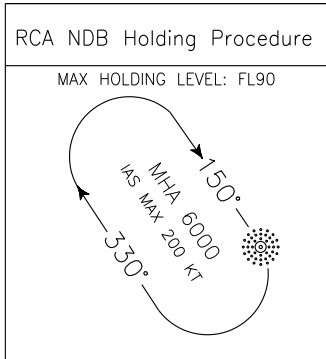
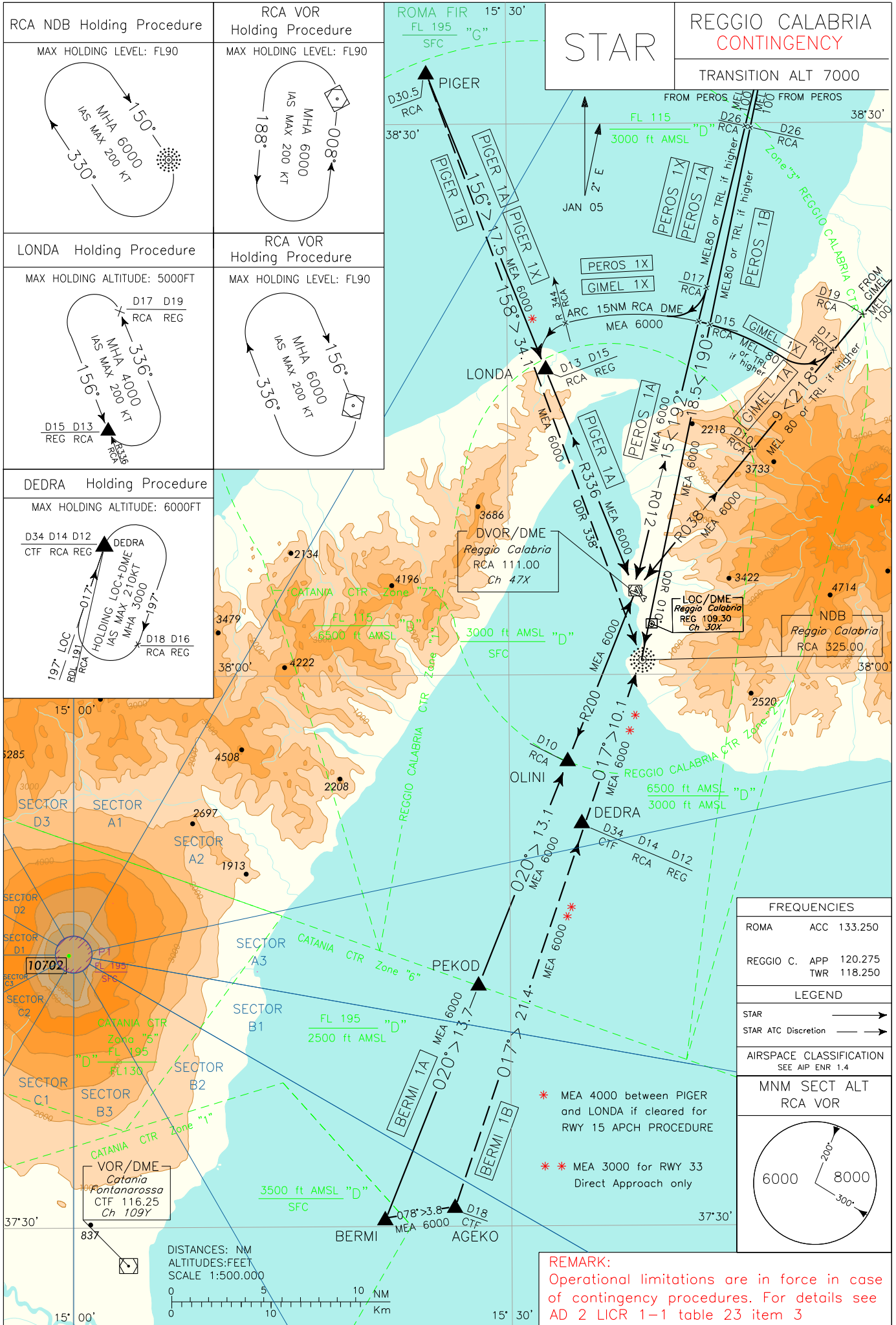
GIMEL – TR 218° (RDL 038 RCA VOR) – RCA VOR/DME.

MEL/MEA: GIMEL – RDL 038/19 NM RCA VOR/DME: FL 100; RDL 038/19NM RCA VOR/DME – RDL 038/10NM RCA VOR/DME: FL 80 o livello di transizione se più alto/ or transition level if higher; RDL 038/10NM RCA VOR/DME – RCA VOR/DME: 6000 FT

Intenzionalmente bianca

Intentionally left blank

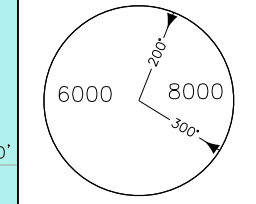
CHANGE: ASH CLOUD SECTOR MODIFIED



FREQUENCIES	
ROMA ACC	133.250
REGGIO C. APP	120.275
TWR	118.250

LEGEND	
STAR	
STAR ATC Discretion	
AIRSPACE CLASSIFICATION	
SEE AIP ENR 1.4	

MNM SECT ALT
RCA VOR



REMARK:
Operational limitations are in force in case of contingency procedures. For details see AD 2 LICR 1-1 table 23 item 3

NOTA/REMARK

In caso di procedure contingency sono in vigore **LIMITAZIONI OPERATIVE** di cui alla tabella 23 item 3 della sezione AD 2 LICR 1-1/OPERATIONAL LIMITATIONS are in force in case of contingency procedures, for details see AD 2 LICR 1-1 table 23 item 3

PIGER 1A

PIGER – TR 156° (RDL 336 RCA VOR) – LONDA – RCA VOR/DME.

PIGER 1A

PIGER – TR 156° (RDL 336 RCA VOR) – LONDA – RCA VOR/DME.

MEA: PIGER – LONDA: 6000 FT (4000 FT se autorizzati per le procedure strumentali di avvicinamento RWY15/if cleared for RWY15 instrument approach procedures); LONDA – RCA VOR/DME: 6000 FT

PIGER 1B (A discrezione ATC)

PIGER – TR 158° (QDR 338° RCA NDB) – RCA NDB.

PIGER 1B (ATC discretion)

PIGER – TR 158° (QDR 338° RCA NDB) – RCA NDB.

MEA: PIGER – RCA NDB: 6000 FT

BERMI 1A

BERMI – TR 020° (RDL 200 RCA VOR) – PEKOD – OLINI – RCA VOR/DME.

BERMI 1A

BERMI – TR 020° (RDL 200 RCA VOR) – PEKOD – OLINI – RCA VOR/DME.

MEA: BERMI – RCA VOR/DME: 6000 FT

BERMI 1B (A discrezione ATC)

BERMI – TR 078° (RDL 078 CTF VOR) – AGEKO – TR 017° (QDR 197° RCA NDB) – DEDRA – RCA NDB.

BERMI 1B (ATC discretion)

BERMI – TR 078° (RDL 078 CTF VOR) – AGEKO – TR 017° (QDR 197° RCA NDB) – DEDRA – RCA NDB.

MEA: BERMI – AGEKO – DEDRA – RCA NDB: 6000 FT (3000 FT se autorizzati per un avvicinamento diretto per RWY33/if cleared for RWY33 direct approach)

PEROS 1A

PEROS – TR 192° (RDL 012 RCA VOR) – RCA VOR/DME.

PEROS 1A

PEROS – TR 192° (RDL 012 RCA VOR) – RCA VOR/DME.

MEL/MEA: PEROS – RDL 012/26 NM RCA VOR/DME: FL100; RDL 012/26 NM RCA VOR/DME - RDL 012/15 NM RCA VOR/DME: FL80 o livello di transizione se più alto/ or transition level if higher; RDL 012/15 NM RCA VOR/DME – RCA VOR/DME: 6000FT

PEROS 1B

PEROS – TR 190° (QDR 010° RCA NDB) – RCA NDB.

PEROS 1B

PEROS – TR 190° (QDR 010° RCA NDB) – RCA NDB.

MEL/MEA: PEROS – QDR 010° RCA NDB/26 NM RCA DME: FL100; QDR 010° RCA NDB/26 NM RCA DME - QDR 010° RCA NDB/15 NM RCA DME: FL80 o livello di transizione se più alto/ or transition level if higher; QDR 010° RCA NDB/15 NM RCA DME – RCA NDB: 6000FT

GIMEL 1A

GIMEL – TR 218° (RDL 038 RCA VOR) – RCA VOR/DME.

GIMEL 1A

GIMEL – TR 218° (RDL 038 RCA VOR) – RCA VOR/DME.

MEL/MEA: GIMEL – RDL 038/19 NM RCA VOR/DME: FL 100; RDL 038/19NM RCA VOR/DME – RDL 038/10NM RCA VOR/DME: FL 80 o livello di transizione se più alto/ or transition level if higher; RDL 038/10NM RCA VOR/DME – RCA VOR/DME: 6000 FT

PIGER 1X

PIGER – TR 156° (RDL 336 RCA VOR) – LONDA.

PIGER 1X

PIGER – TR 156° (RDL 336 RCA VOR) – LONDA.

MEA: PIGER – LONDA: 6000 FT

PEROS 1X

PEROS – TR 192° (RDL 012 RCA VOR) fino a 17 NM RCA DME, quindi virare a destra fino ad intercettare e seguire ARC 15 NM RCA DME. Attraversando RDL 344 RCA VOR virare a sinistra fino ad intercettare e seguire RDL 336 RCA VOR per il punto LONDA.

PEROS 1X

PEROS – TR 192° (RDL 012 RCA VOR) until 17 NM RCA DME, then turn right until joining ARC 15 NM RCA DME. Crossing RDL 344 RCA VOR turn left until joining RDL 336 RCA VOR bound to LONDA.

MEL/MEA: PEROS – RDL 012/26 NM RCA VOR/DME: FL100; RDL 012/26 NM RCA VOR/DME - RDL 012/17 NM RCA VOR/DME: FL80 o livello di transizione se più alto/ or transition level if higher; RDL 012/17 NM RCA VOR/DME – LONDA: 6000FT

GIMEL 1X

GIMEL – TR 218° (RDL 038 RCA VOR) fino a 17 NM RCA DME, quindi virare a destra fino ad intercettare e seguire ARC 15 NM RCA DME. Attraversando RDL 344 RCA VOR virare a sinistra fino ad intercettare e seguire RDL 336 RCA VOR per il punto LONDA.

GIMEL 1X

GIMEL – TR 218° (RDL 038 RCA VOR) until 17 NM RCA DME, then turn right until joining ARC 15 NM RCA DME. Crossing RDL 344 RCA VOR turn left until joining RDL 336 RCA VOR bound to LONDA.

MEL/MEA: GIMEL – RDL 038/19 NM RCA VOR/DME: FL 100; RDL 038/19NM RCA VOR/DME – RDL 012/15NM RCA VOR/DME: FL 80 o livello di transizione se più alto/ or transition level if higher; RDL 012/15NM RCA VOR/DME – LONDA: 6000 FT

Intenzionalmente bianca

Intentionally left blank